

# Resilient women Resilient world



**Pathfinder**  
INTERNATIONAL

2019 ANNUAL REPORT



PHOTO: Aliy Shaban Amour/Prime Media Pro

## Dear Pathfinders and partners worldwide,

Women's sexual and reproductive health and rights are human rights. Honoring those rights is essential to empowering women and girls and improving the health of our planet.

We have made great progress over the past several decades in empowering women to make the most important decisions of their lives—if or when to marry and start a family—but we still have so much work to do.

More than 200 million women around the world who do not wish to become pregnant are not using contraception. More than 800 women die each day from preventable causes related to pregnancy and childbirth.

Over the past year, we have seen dangerous policies enacted to exacerbate these challenges and restrict sexual and reproductive rights—limiting the control millions of women and girls have over their own bodies and putting their health and lives at risk. Pathfinder remains steadfast in its commitment to stand up to these restrictive policies and to support women and girls in reaching their greatest potential.

Women who reach their greatest potential are poised to help save our planet. Women and girls, when they have reproductive autonomy, stay in school, overcome harmful social and gender norms that hold them back, can become leaders, change-makers, and innovators.

Through our population, health, and environment programs in East Africa, we have watched this transformation over and over. These programs engage entire communities—men and boys, traditional

and religious leaders, health care professionals and community health workers, business owners, and school administrators—to support women and girls to reach their full potentials. The result is empowered women.

Empowered women propose and carry out solutions to reducing our carbon footprint and making their communities healthier. Empowered women help encourage other women and entire communities to adopt sustainable agricultural practices, to start environmentally friendly businesses, to cook with energy-saving stoves, to plant trees, and to use contraception. Through their leadership, they make their families and communities more resilient to shocks from climate and poverty.

As a pioneer and leader in the field of sexual and reproductive health and rights, Pathfinder is committed to partnering with individuals, faith-based and non-government organizations, the private sector, and governments that have missions aligned with our own—to increase our planet's resiliency through the resiliency and contributions of healthy women and girls.

I invite you to join us.

Yours,

Lois Quam  
President & Chief Executive Officer

# Comprehensive sexual and reproductive health care is a human right.

We honor and support every woman's right to comprehensive sexual and reproductive health care. This means access to modern contraception, safe abortion, and post-abortion care; care before, during, and after pregnancy; and the prevention and treatment of cervical cancer, HIV, and other sexually transmitted infections. High-quality sexual and reproductive health care is crucial to empowering women and girls around the world and making them more resilient.



PHOTO: Simon de Trey-White

## Modern Contraception

INDIA

Injectable contraceptives are one of the most popular ways to prevent pregnancy around the world, but until recently, women in India could not access them. In 2016, the **Salaamti** project introduced injectables for the first time in India through public health facilities in four districts of Haryana state. Through a partnership with the Haryana state government, Salaamti has been scaled up to seven districts in Haryana.

**DONOR:** Bill & Melinda Gates Foundation



Since January of 2018, more than

**63,000**

women and girls have received a contraceptive through this program.

TANZANIA

The **Your Decision, Your Tomorrow** project provides rural communities in Shinyanga, Tanzania, with a full range of contraceptive options—including long-acting methods like intrauterine devices and implants—through existing immunization outreach clinics. Since women already go to the immunization clinics to have their children vaccinated, it is a practical place to offer them contraceptives.

**DONOR:** The Erik. E. and Edith H. Bergstrom Foundation

Over the past year, more than **11,000** women have voluntarily adopted injectable contraceptives through Salaamti-supported health facilities in Haryana.

## Safe Abortion

CÔTE D'IVOIRE, BURKINA FASO, AND DRC

A majority of the 20 million unsafe and often fatal abortions every year can be attributed to the fact that abortion remains illegal and unregulated in many countries. Through our **Resonance** project—launched in October of 2018—we are creating coalitions for safe abortion advocacy across Côte d'Ivoire, Burkina Faso, and Democratic Republic of the Congo (DRC).

**Côte d'Ivoire, Burkina Faso, and DRC recently launched national advocacy coalitions for safe abortion.**

**DONOR:** AmplifyChange (a pooled fund supported by a group of European donors)



From January to June of 2019,

**13,416**

HIV-positive individuals were reinitiated on ART.

## HIV Prevention & Treatment

MOZAMBIQUE

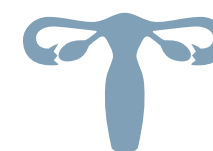
Pathfinder began working this year in three of Mozambique's provinces—Sofala, Manica, and Gaza—to lead the **Strengthening Adherence and Retention of Patients in Treatment for HIV and TB through Community Interventions** project. The project increases the number of people living with HIV who adhere to life-saving antiretroviral treatment (ART). This means reaching HIV-positive individuals who may have received ART at a health facility but stopped their treatment for various reasons—stigma and discrimination, distance to the health facility and lack of money to pay for transport, and stockouts of medicines—and getting them back on treatment.

**DONOR:** Global Fund — Center for Collaboration in Global Health

Over the past year, Pathfinder has supported the screening of

**4,127**

women in Ethiopia and treatment for those who screened positive for precancerous lesions.



## Cervical Cancer Prevention & Treatment

ETHIOPIA

Cervical cancer is a leading killer of women in Africa, even though it is completely preventable. Pathfinder led Ethiopia's first pilot cervical cancer prevention and control project, Addis Tesfa, from 2009-2015. Our **Enhancing Cervical Cancer Secondary Prevention** through Screening and Treatment project continues to assist the Ethiopian government with scaling up the program nationally and advancing screening and treatment protocols.

**DONOR:** PEPFAR



PHOTO: Vito Merraio

## Adolescents and youth are our partners and our promise for a better future.



PHOTO: Estrella Alcalde

Because far too many adolescents still cannot access modern contraception—due to discrimination, stigma, and lack of information—complications from pregnancy and childbirth remain a leading killer of adolescent girls globally. We reach adolescents and youth with information, support, and care that allows them to grow into healthy, productive, resilient adults. This includes helping them to delay pregnancies until they are ready through access to youth-friendly contraceptive, abortion, and post-abortion care services; increasing gender equity by transforming negative perceptions and practices that hold girls and boys back; and reaching young married women and couples with sexual and reproductive health information and services.



PHOTO: Saliha Lewis

### MOZAMBIQUE

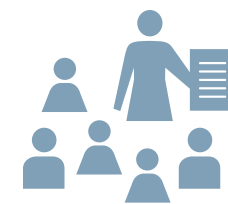
## Junt@s

Junt@s engages entire communities to support adolescent health and wellbeing. Girls and boys from primary and secondary schools participate in discussions about sexual and reproductive health and gender equality, including the merits of delaying marriage and pregnancy. School corners host health providers who offer contraceptive information and services to adolescents, and local health clinics offer contraceptive methods, HIV counseling and testing, safe abortion care, and gender-based violence services. Police ensure that gender-based violence cases are mediated through the judicial system. Parents and neighbors support the adolescents in their lives to make healthy decisions and succeed.

**“In relation to adolescent pregnancies, we can say that this is a successful story. Since we are working with the boys and girls, we haven’t registered any case of pregnancy. I am sure the (project) activities are influencing.”**—Mentor Teacher, Maputo Province

**DONOR:** Royal Norwegian Embassy

From January to June of 2019, more than **70,000** adolescent boys and girls have participated in discussions about sexual and reproductive health and gender at their schools.



### PAKISTAN

## Naya Qadam

Although many reproductive health programs have sought to delay early pregnancies and early marriage among adolescent girls, fewer have focused on encouraging young women who have already become pregnant to delay and space subsequent pregnancies. Naya Qadam operates in six districts of Pakistan’s Sindh and Punjab provinces to increase the access of young women, ages 15 to 24, to high-quality post-pregnancy and post-abortion family planning including a full range of contraceptive options. These are opportune times to engage young women in contraceptive counseling—when they are already at the health facility. This approach has included building the capacity of health providers, lady health workers, community midwives, lady health visitors, and youth champions to educate people about, refer, or offer these services.

**“Naya Qadam gave me the opportunity to step outside my house for the first time and interact with the outside world. Not only has it increased my self-confidence, but also provided me the goals I need to work towards in life.”** — Zubaria Latif, Youth Champion, Nawabshah

**DONOR:** Bill & Melinda Gates Foundation



Naya Qadam has trained more than **1,200** public and private providers in postpartum and post-abortion family planning service provision.

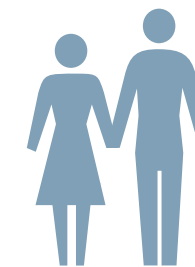
### ETHIOPIA

## Act with Her

A girl’s ability to make positive choices and to benefit from key health, education, and economic opportunities throughout her life is closely linked to how gender norms are perpetuated in her society and how others view her worth, her rights, and her future. Act with Her partners with adolescent girls and boys, families, communities, and the systems girls rely on to increase adolescent empowerment and gender equity in societies where girls are typically disempowered. Mentor-led groups in the Amhara, Oromia, and Afar regions help girls and boys fulfill their right to education, bodily integrity, health, psychosocial well-being, voice, agency, and economic empowerment.

**One girl reported that she “was considering myself as less than men... but it’s wrong. I can do what boys do.”**

**DONOR:** Bill & Melinda Gates Foundation



With more than 13,000 adolescents reached in its first year, the program will reach up to **50,000** adolescents and their parents by 2022.



PHOTO: Saliha Lewis

**We go where the need is greatest.**



PHOTO: Jenna Olson

Pathfinder is driven by the conviction that all people, regardless of where they live, have the right to decide whether and when to have children, to exist free from fear and stigma, and to lead the lives they choose.

We collaborate closely with our partners around the world to offer life-saving reproductive and maternal and newborn care, integrate health and environment work to address the holistic needs of communities, and reach the most vulnerable populations, including those who have been displaced due to conflict and natural disaster.

**BANGLADESH**

## Support to Rohingya Refugees

Since August 2017, an estimated 745,000 Rohingya people from Myanmar fled to Bangladesh to escape extreme atrocities and volatility in Rakhine state. Pathfinder has supported our local partner, Research Training and Management International, to provide critical sexual and reproductive health services to the Rohingya in Camp 22 of Cox's Bazaar, Bangladesh, and to the growing number of Rohingya in host communities of Teknaf Upazila.

**DONOR:** The David and Lucille Packard Foundation

**These gender-responsive sexual and reproductive health services include contraception, menstrual regulation care, and gender-based violence prevention and response—services essential to the health of these displaced populations.**



PHOTO: Jenna Olson

**NIGERIA**

## Saving Mothers, Giving Life

Through a suite of evidence-based interventions and upgrades to health facilities, the Saving Mothers, Giving Life Program in Cross River State, Nigeria, drastically reduced the number of mothers and newborns dying from complications during childbirth.

Pathfinder engaged communities and strengthened health systems to transport women to health facilities in time for delivery, trained health providers to offer life-saving services, and equipped health facilities for safe deliveries.

"In Nigeria, midwives often deliver babies using their cell phone flashlights," said Dr. Farouk Jega, Pathfinder's country director in Nigeria. "But not anymore."

Through our partnership with We Care Solar, 150 health facilities received solar suitcases to power them up.

**"Without it, emergency obstetric and newborn care couldn't have been done in the night," said Dr. Jega.**

**DONOR:** USAID and Merck for Mothers



Between 2016 and 2019,

**66%**

fewer women and

**44%**

fewer newborns died from complications during childbirth in Cross River State's health facilities than during a previous comparable period.



PHOTO: Seun Asala

**MOZAMBIQUE**

## Cyclone Idai

Cyclone Idai—one of the worst tropical storms on record in the South Hemisphere—struck Mozambique in late March. Given our strong partnership with the Government of Mozambique and development partners in the country, we were able to assist with the recovery effort in Sofala and Cabo Delgado, two hard hit regions.

**AFTER THE CYCLONE HIT, PATHFINDER:**



Deployed emergency services beyond the scope of family planning, which included supporting an estimated 43,000 expecting mothers in flood-affected areas.

Assisted with distributing 900,000 oral cholera vaccines to prevent an outbreak and further crisis.

Made repairs to health centers and provided crucial support for women, children, and families affected by the storm.

Partnered with peer organizations to curb the spread of malaria from stagnant flood waters.

Provided fuel, cars, and solar lamps so that health care could continue despite crippled infrastructure.



PHOTO: Maren Vespa

# Population, health, and environment programs support women to lead resilient communities.

Pathfinder's population, health, and environment (PHE) approach addresses some of the most pressing issues affecting rural, vulnerable populations: the effects of climate change, food security, nutrition, livelihoods, sexual and reproductive health and rights, and gender inequities. Our PHE programs support women to be innovators and change-makers who build resilient communities that can thrive through the most formidable global challenges—including climate change. We do this by supporting women and girls to make the most important decisions about their lives and their bodies, receive quality health care, get education, earn an income, and manage natural resources sustainably.

PHOTO: David Cooper

## TANZANIA

### Landscape Conservation in Western Tanzania

Pathfinder began partnering with the Jane Goodall Institute this year, launching a community-centered conservation program in western Tanzania. The program seeks to protect endangered chimpanzee populations and their habitats while encouraging sustainably managed natural resources and increasing communities' access to sexual and reproductive health care.

**"I'm tremendously proud of the Jane Goodall Institute's community-centered conservation work in Tanzania over nearly 25 years and I am delighted about the news of our new initiative. It will make such a difference in our partnerships with local communities and our efforts to protect wildlife and habitats in the region."** —*Dr. Jane Goodall, Founder, Jane Goodall Institute*

**DONOR:** USAID



PHOTO: Roshni Lodhia

## KENYA, UGANDA, EAST AFRICA REGION

### HoPE-LVB & PHE Learning Lab

Over the past seven years, Pathfinder has played a catalytic role in advancing PHE programs in East Africa. Two major initiatives have been Pathfinder's PHE Learning Lab and the Health of People and Environment in the Lake Victoria Basin (HoPE-LVB) project. Together with our PHE projects in Tanzania, these initiatives have led to governments adopting PHE policies and dedicating resources to PHE programs, and to regional support for extending PHE models across East Africa.

**DONOR:** Margaret A. Cargill Philanthropies & John Swift



PHOTO: Pathfinder Kenya

## NIGER

### RISE

Zinder, Niger, is in the Sahel—a place that is extremely susceptible to climate-induced shocks. In partnership with a resilience organization, the Evidence to Action/Resilience in the Sahel Enhanced (RISE) project trained conservation farming groups to encourage use of family planning services and community-based distributors of family planning services to provide information on conservation farming techniques, water, sanitation, hygiene, and nutrition.

Through these integrated activities, conservation farming leaders—the majority who are men—reached 1,822 men in Zinder with information and referrals for family planning services over nine months.

**DONOR:** USAID



PHOTO: Pathfinder Niger



**14 female community-based distributors who learned how to apply conservation farming techniques reported doubling their harvests and attracting the interest of other women in adopting these techniques.**

## PHE WINS IN EAST AFRICA

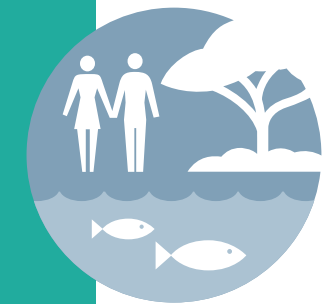
Regional PHE strategy developed by the East Africa Community (Kenya, Rwanda, South Sudan, Tanzania, and Uganda)

National PHE policies developed in Kenya, Uganda, and Tanzania

County governments in Homa Bay and Siaya Counties, Kenya, put their own resources behind PHE programming

60+ community by-laws on PHE issues established across the Lake Victoria Basin region

East African universities rolled out PHE curricula



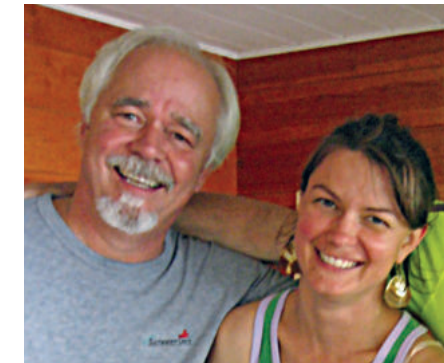
# Thank you for your commitment.



PHOTO: SAJIA LEWIS

## George and Sarah Todd

Advancing family planning programs has been part of the Todd legacy since the 1960s. George Todd's father, a Congressman from Michigan, was part of an effort that first allotted US Government funds to voluntary family planning programs. After his term in Congress, he then became CEO of Planned Parenthood and later joined Pathfinder's board of directors. George's step-mother, Caroline Ham, remains on the board of Planned Parenthood of Michigan. The Todd family continues to support Pathfinder.



George and Sarah Todd

"The legacy continues," said George, recalling a visit he and his wife took to see a Pathfinder program in Vietnam.

"My wife and I visited the Pathfinder operation in Hanoi many years ago. It not only provided family planning services to women and families in Hanoi but was a busy delivery center. Infant and maternal health care were obviously a valued part of what Pathfinder was providing. I remember how proud and committed the staff was to the community. Pathfinder continues to inspire us."

George's daughter, Sarah, said she feels that her work as a midwife directly connects her to Pathfinder's mission, referring to women's access to contraception as "a superpower!"

"It [contraception] is completing high school, it's advancing in a career, escaping an abusive relationship, managing a medical condition, being able to provide for the children a woman ready has. It is so many things, it's a say in the future."

"As a midwife, I see daily how having access to safe, reliable, and acceptable contraception is at the very foundation of gender equality. We have different challenges to face on this front, depending on where we are born, but without contraception, there is no hope for a level playing field," she continued.

Sarah plans to take her daughter, Rose, to visit Pathfinder's programs in Ethiopia.

**"I want Rose to witness this work firsthand, and see how the lives of women and girls are being changed for the better, how futures are being created, not because we are exporting our beliefs, but because we are honoring a belief that transcends culture and borders: the belief that women and girls deserve to be equal, healthy, whole and to have a say in their futures."**

## Sabah Husain

Sabah Husain is a first-generation American from Minnesota with Pakistani roots. Realizing the opportunities she has been afforded because of how she grew up, Sabah dedicates her volunteer time to Pathfinder in an effort to give back.

"I am a first-generation American and my parents are from Pakistan. As I've gotten older and had to take care of my own health insurance and my own body, I realize how different it is for myself and my relatives who live in Pakistan. There are such discrepancies—and I want to give back."

Sabah Husain (left) and Tabinda Sarosh, Pathfinder's Country Director in Pakistan



Sabah is especially motivated by the diversity and cultural sensitivity of Pathfinder programming.

**"Pathfinder's projects are incredibly diverse...so adaptable. Pathfinder focuses on each country and makes sure programs are sensitive to different cultures. Pathfinder really showed me that when women have the right to make that decision themselves, the amount of success is exponential."**

## Brian Cunningham

For the past 15 years, Brian Cunningham has been a Pathfinder employee in Watertown, Massachusetts, where he currently serves as Pathfinder's Financial Systems Director. Compelled by Pathfinder's mission, he also supports the organization through monthly giving.

"Pathfinder's mission is particularly moving for me because in my profession I help people and create opportunities for them to succeed. The mission at Pathfinder brings opportunities to women, men, and families around the world where there are none," Brian said.

"Pathfinder's global programs motivate me as a Pathfinder Watertown staff member because they bring desperately needed services to women, men, and families that are easily and readily accessible to me and that I sometimes take for granted."

He recalled a fond memory of working for Pathfinder, when he participated in a week-long global leadership summit in Mombasa, Kenya.

**"Working long days as a problem solver for staff who are on the ground executing Pathfinder's programs is one of the most humbling and rewarding experiences of my life."**





PHOTO: Elle Honein

**BOARD OF DIRECTORS**

**FOUNDERS**

Clarence J. Gamble, MD  
[1894-1966]

Sarah B. Gamble  
[1898-1984]

**CORPORATE OFFICERS**

Lois Quam  
*President*

Chad Snelgar  
*Treasurer*

Bruce Kuhlik  
*Corporate Secretary*

**BOARD LEADERSHIP**

Roslyn Watson  
*Chairperson*

Tim Brown  
*Vice Chairperson*

Larrine S. Holbrooke, Esq.  
*Board Secretary*

Ralph S. Tate  
*Finance Chairperson*

**BOARD OF DIRECTORS**

Sharon Allison  
Richard Berkowitz  
Lida Coleman  
Deb De Witt  
Jessie Druga  
Walter Gamble  
Ann Mond Johnson  
Ben Kahrl  
Judy Kahrl  
Jerry Lanier

Liz Maguire  
Collin Mothupi  
Tabara Ndiaye  
Bonnie New  
Prakash Shah  
Ann Svensén  
Judy Tabb  
Bill Tate  
Manuel Urbina

## To my fellow Pathfinder supporters,

Pathfinder has always been at the forefront of advancing sexual and reproductive health and rights in the countries where we work. For more than 60 years, we have worked hand in hand with communities and the public health systems that serve them to allow women, men, and young people to be resilient in the face of even the most formidable obstacles. Pathfinder remains steadfast in its commitment to continuing this work, despite the formidable challenges we face.

Throughout our history, we have seen shifts in politics, technologies, global health priorities, and the environment, which have required us to shift the way we operate. One thing that has not changed, however, is the locally driven nature of our programs. Our programs ensure that the local communities we serve are not only recipients of our programs—that they are the solution.

Of our more than 1,200 staff around the world, almost 90 percent work in the countries they know and love. They grew up with the customs and systems in which they operate, hearing about the hopes and desires of the people they reach. They make us ideally positioned to influence the harmful social and gender norms that continue to hold women and girls back and to strengthen the public systems that our partner communities rely on.

Being insiders allows us to run programs like *Act with Her* in Ethiopia and *Junt@s* in Mozambique. These programs combat harmful gender norms that hold girls back and make them believe they are less capable than boys.

These programs not only engage adolescent boys and girls in transformative discussions, they engage entire communities and systems to support their health, education, and growth. Through these programs, we are giving girls the power to believe in themselves, and boys the power to support them in their beliefs.

As an Ethiopian girl told an *Act with Her* mentor: "I can do what boys do."

Empowering women and girls and investing in them as leaders and role models is crucial to the future trajectory of our planet.

I've watched over the past decade as Pathfinder's population, health, and environment (PHE) programs have invested in women and girls to drive the health of entire communities and ecosystems, and how effective this approach has been. It has fostered gender equity, mitigated the effects of climate change, increased food security, and improved nutrition in some of the most vulnerable communities on this planet.

Our partners have taken notice too. That's why the three countries where we have led our biggest PHE programs—Kenya, Tanzania, and Uganda—have all adopted national PHE policies. That's why the Jane Goodall Institute is working with us on a program in western Tanzania that seeks to protect endangered chimpanzees while supporting women and girls to exercise their right to reproductive autonomy and sustainably manage natural resources.

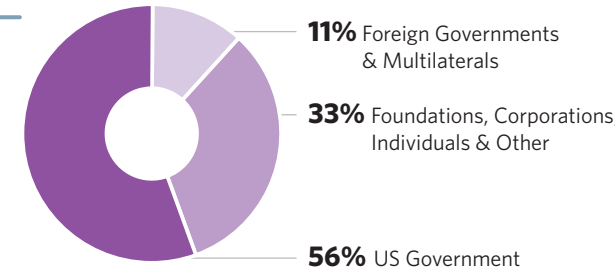
The world is rapidly changing. Investing in women and girls is a moral imperative, but also a strategy to mitigate the effects of climate change and lead us on a path toward a better tomorrow. Please join us in ensuring Pathfinder can continue to uplift women and girls around the world. Our world depends on it.

Roslyn Watson  
*Board Chairperson*

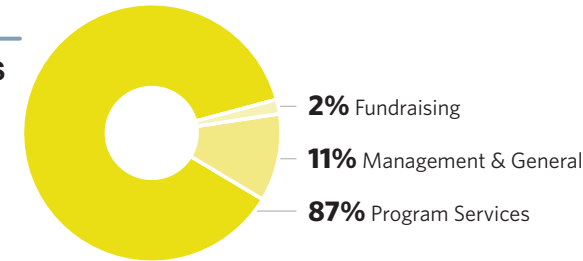
## Financial Highlights

For the year ending June 30, 2019

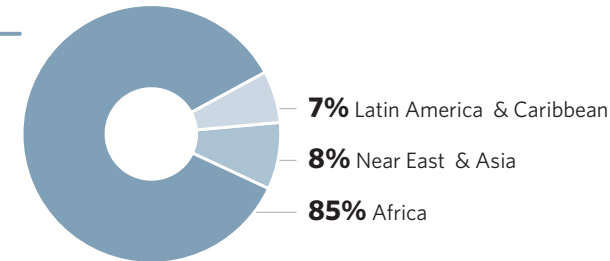
**REVENUE**



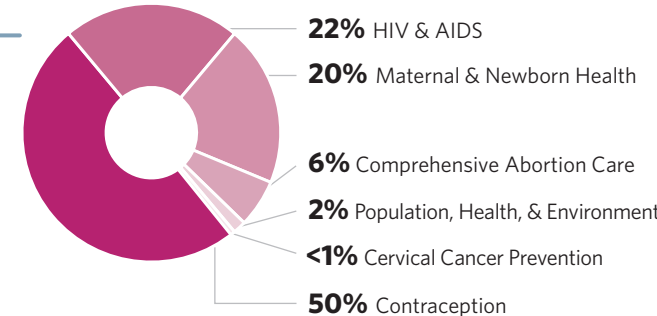
**EXPENSES**



**PROGRAM EXPENSES BY REGION**



**PROGRAM EXPENSES BY AREA**



**STATEMENT OF ACTIVITIES**

|                      |                       |
|----------------------|-----------------------|
| <b>REVENUE</b>       |                       |
| Grants and contracts | \$ 119,985,014        |
| Contributions        | \$ 10,172,752         |
| Other                | \$ 573,503            |
| <b>Total</b>         | <b>\$ 130,731,269</b> |

|                        |                       |
|------------------------|-----------------------|
| <b>EXPENSES</b>        |                       |
| Program services       | \$ 109,501,467        |
| Management and general | \$ 13,764,906         |
| Fundraising            | \$ 2,242,165          |
| <b>Total</b>           | <b>\$ 125,508,538</b> |

|                                   |               |
|-----------------------------------|---------------|
| Operating surplus                 | \$ 5,222,731  |
| Non-operating gain                | \$ 1,149,726  |
| Change in net assets for the year | \$ 6,372,457  |
| Net assets at beginning of year   | \$ 25,005,093 |
| Net assets at end of year         | \$ 31,377,550 |

The information presented above is drawn from Pathfinder International's financial statements, audited by CBIZ, Inc. and Mayer Hoffmann McCann P.C. They are available upon request or at [pathfinder.org/financials](http://pathfinder.org/financials).

Pathfinder International receives Charity Navigator's highest rating for accountability and transparency.



Estimates for maternal deaths averted, unintended pregnancies averted, direct health care costs saved, and unsafe abortions averted are calculated with Marie Stopes International's Impact Calculator 2 v3 using data on contraceptive commodities from 35 projects in 13 countries.



## Our Global Impact in 2019

**4.4 MILLION+**  
UNINTENDED PREGNANCIES AVERTED

**1.1 MILLION+**  
UNSAFE ABORTIONS AVERTED

**\$229 MILLION+**  
SAVED IN DIRECT HEALTH CARE SPENDING

**8,100+**  
FEWER MATERNAL DEATHS

**86,500+**  
FEWER CHILD DEATHS

**1.6 MILLION+**  
INDIVIDUALS RECEIVED HIV COUNSELING AND TESTING



**12.9 MILLION+**  
VISITS FOR CONTRACEPTIVE SERVICES

**4.2 MILLION+**  
VISITS MADE BY ADOLESCENTS AND YOUTH FOR CONTRACEPTIVE SERVICES







9 GALEN STREET, SUITE 217  
WATERTOWN, MA 02472 USA  
T. 617.924.7200

1015 15TH STREET NW, SUITE 1100  
WASHINGTON, DC 20005 USA  
T. 202.775.1977

[PATHFINDER.ORG](http://PATHFINDER.ORG)



COVER: Ami Vitale; BACK COVER: Maren Vespi; PRINTING: Penmor Lithographers; DESIGN: Springtide Studio

