

# A Panoramic View of Sexual and Reproductive Health and Rights

Since 1957, we have worked to increase access to sexual and reproductive health and rights (SRHR) and promote healthy pregnancies. We are committed to expanding access to all methods of contraception, safe abortion, and postabortion care, while integrating services for HIV and cervical cancer within holistic sexual and reproductive health services. Taken together, our programs empower millions of women, men, and young people to choose their own paths forward.

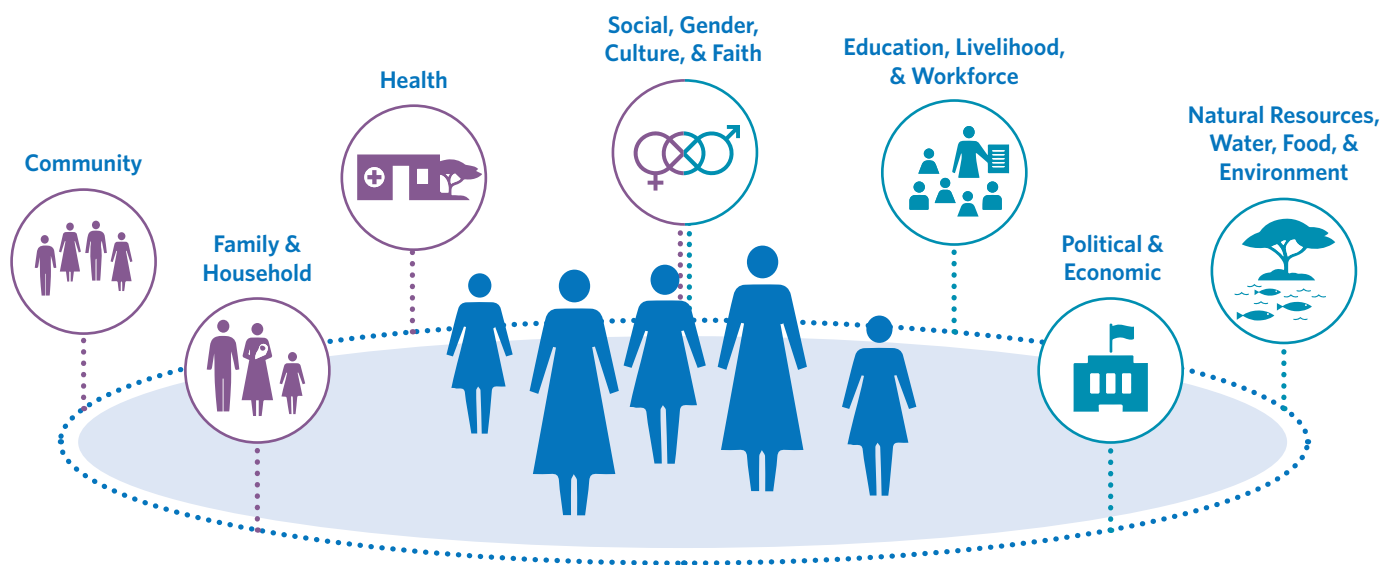
From our long history advancing comprehensive SRHR, we know that delivering the highest quality services is critical for getting results. We also know that services may not always be sufficient on their own to yield the highest possible impact. In some settings the maximum success of even the best SRH service delivery is routinely constrained by forces that lie outside of a health facility (a weak national policy, for example), or even beyond the health sector (via social, political, or economic barriers). In exchange, poor SRHR status persistently stalls progress toward multiple other sustainable development goals.

We believe that if key health, social, environment, political, and economic systems—and the connections between them—are strengthened, this vicious cycle can be converted into a mutually beneficial one. And that a whole-systems view of comprehensive SRHR is what fully unleashes the power of women and girls to transform their lives, and change the world.

## OUR PANORAMIC VIEW OF SRHR

We execute our vision for a panoramic view of SRHR through applying two closely related but distinct points of view:

- **Integrated community and health systems strengthening** improves SRHR for women and girls and health for all by building stronger bridges between family, household, social, gender, cultural, faith, and health systems
- **Strengthening linkages with social systems and multiple sectors beyond health** has the potential to better meet the needs of women and girls, via active consideration of the ways in which social, education, workforce, natural environment, political, and economic systems can all inhibit or accelerate progress toward comprehensive SRHR outcomes



Every woman and girl is at the center of multiple related systems,  
all linked to her sexual and reproductive health and rights

## Integrated Community & Health Systems Strengthening

We believe that integrating community-level considerations is essential for creating health systems that deliver people-centered and rights-based services, quality of care, and effective coverage. At Pathfinder, meaningful engagement with community-level stakeholders and health systems is integrated throughout our systems strengthening approaches. We work in partnership with public and private health systems at the national, regional, provincial, district, and community levels. Our approach is people-centered, focusing on clients and providers as both individuals and community members. Together, community and health systems stakeholders participate in the design, delivery, monitoring and evaluation of activities aimed at improving health and wellbeing, and universal health coverage.

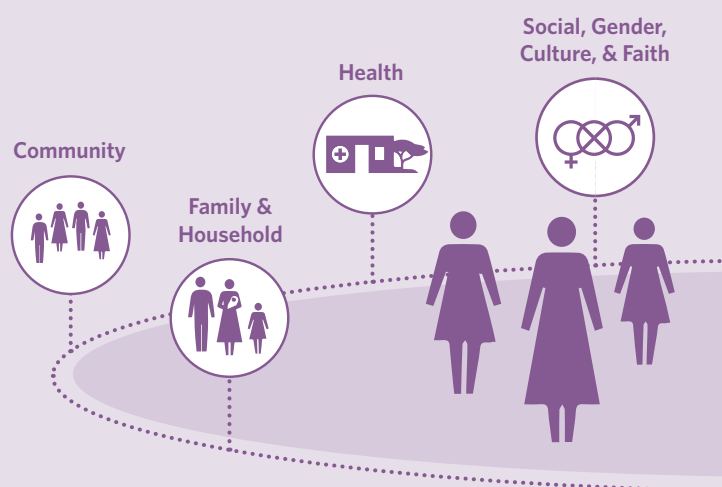
**Bridging gaps in quality care at the community level:** We know first-hand what evidence confirms: community and lay health workers play an essential role in comprehensive, client-centered, rights-based health systems. Community health workers (CHWs) have long been important partners for mobilizing and educating adolescents, women, and men about their reproductive health and rights, and trained CHWs safely provide contraceptive methods and offer other health services for women, children, and families. Therefore, we support governments to introduce, improve, or formalize community health worker platforms as part of national health systems, while offering capacity enhancement, training, and support to CHWs themselves. We also strive to leverage community health systems in ways that help improve socio-cultural, class, or power dynamics that often marginalize some women, adolescents, or communities. For example, community and lay workers can serve as advocates and champions in the prevention of violence against women and girls.

**Cultivating enabling environments for providers:** We see health workers as embedded in larger social, community, and health systems that influence their behavior and job effectiveness, so we tailor our programs to meet the needs of these workers – all through a gendered lens. Is she a community health worker assigned to undergo training at a distant location with no provision for child care? We advocate for her. Is she a midwife whose recommendations are ignored by the referral hospital? We tackle broader gender norms and hierarchies that serve as barriers to services when partnering with local governments and institutions to change organizational culture or strengthen their capacities for health management and supervision. Is she a provider whose own biases could be preventing the highest quality care for clients, particularly young people? We work hard to identify and reduce specific types of provider biases through innovative segmentation strategies.

**Influencing policies and accountability for quality health care:** Advocacy at national, subnational, and community levels plays a key role in our health systems strengthening approaches. At national and subnational levels, we champion budgetary and policy actions that would expand critical SRH services to reach all women and girls, such as advancing adolescent-responsive health systems, or Universal Health Coverage packages and national Sustainable Development plans that include SRHR. At the same time, we aim to ensure that local and community stakeholders (including youth, people with disabilities, marginalized populations, and local civil society groups) are equipped to defend and advocate for their rights and participate in decisions that affect them, including through enhancing innovative mechanisms for holding health systems accountable for delivering quality care.

**Integrated community & health systems strengthening is one key way that Pathfinder advances impact through the core areas of our work:**

- Build sexual and reproductive health and rights capacity
- Improve maternal and newborn care
- Empower adolescents and youth



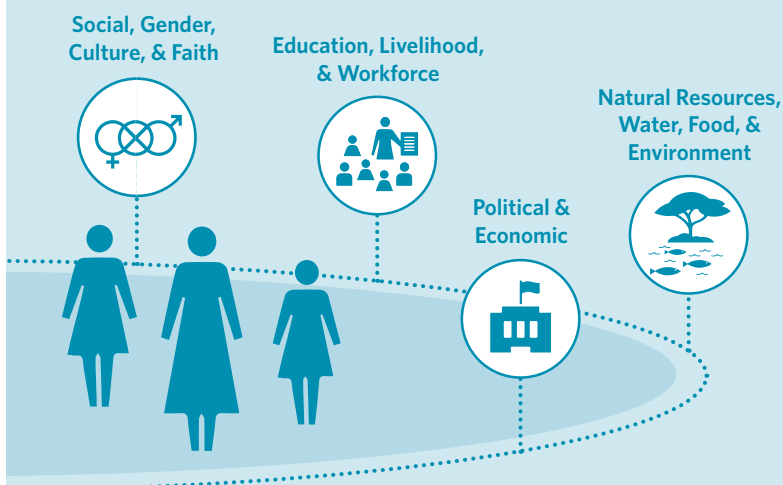
## Strengthening Social Systems & Multi-Sector Linkages

Decades of data prove that SRHR outcomes are strongly influenced by multiple factors that transcend the health sector. Gender inequality, restrictive social, cultural, or faith norms, economic disempowerment, a lack of access to quality education, natural resource depletion and climate change, conflict, and displacement are all underlying, systematic barriers that can prevent women and girls from achieving their rights to sexual and reproductive health and well-being. As a result, we believe that if women and girls have equal status and rights, and communities can better connect and strengthen their social, economic, environmental, and political systems, together we will create lasting change.

**Advancing gender transformative systems:** Both evidence and experience have long underscored how significantly gender norms and social systems can influence SRHR, and therefore we integrate a gender lens across our approaches. From advocating for more inclusive national policies, to integrating gender synchronized and transformative strategies within program design, to advancing constructive engagement with boys and men, to partnering with communities to address harmful gender norms and practices – we take a holistic view of working together with women, girls, men, and boys to advance gender equality. We also know that building social cohesion and the agency of women, girls, and marginalized key populations is an essential part of eliminating child marriage, preventing early and unintended childbearing, and delivering rights-based SRH programs. We also partner closely with cultural and faith leaders in shifting social norms in ways that can help improve access to and demand for SRH services.

**Integrating SRHR with other development sectors:** We believe that attaining SRHR goals requires a holistic, comprehensive view of the lives of women, girls, and their families, which in turn requires attention paid to the multiple systems in their lives that include but also transcend just health. For example, geographically remote communities often experience reproductive health and environmental challenges in tandem, and each can either exacerbate or accelerate progress in one another. Therefore, we have played a leading role in global efforts to link population, health, and the environment (PHE) and are now expanding the integration of SRHR with food security, WASH, and resilience programming. We also understand that when women and girls are prevented from accessing quality education, engaging in productive livelihoods, or having control over household income, their SRH status suffers as a result. If women and girls have a range of livelihood options, have the right mix of skills to pursue them, and have the power to spend their income as they wish, it could transform the world. We are therefore strongly committed to forging new and creative partnerships with organizations advancing girls' education, vocational and workforce development (particularly for adolescents and young women), and women's economic empowerment.

**Improving SRHR within health systems serving refugees and displaced populations:** Today's unprecedented humanitarian and refugee crisis requires bold new solutions in places where both refugees and host communities share a need for quality SRH services, particularly including those related to sexual and gender-based violence. We advocate for policies and programs that reach refugees with SRH services they urgently need. We strengthen the efficiency and responsiveness of local and national health systems to address the needs of refugee and displaced populations. And, we engage with host communities to better integrate refugee and displaced populations into those improved community, social, and health systems.



### Strengthening social systems and multi-sector linkages is one key way that Pathfinder is growing our expertise and work:

- Invest holistically in women and girls
- Integrate population, health, and environment
- Address SRHR needs of displaced populations

## OUR VISION

---

Pathfinder envisions a world where everyone has access to contraception, where there are zero new HIV infections, where no woman dies from preventable pregnancy-related complications, and where everyone leads a healthy sexual and reproductive life.

## OUR MISSION

---

We champion sexual and reproductive health and rights worldwide, mobilizing communities most in need to break through barriers and forge their own path to a healthier future.

## OUR VALUES

---

**Respect:** Everything we do is built on a foundation of understanding and respect for the values, beliefs, knowledge, and capabilities of our staff, our local partners, and the people we serve.

**Courage:** We go where others often won't—among the most marginalized populations, in the most challenging environments, and in the hardest-to-reach regions—and do what others often don't—confronting obstacles head-on and challenging the status quo—to achieve our mission.

**Collaboration:** We embrace diverse perspectives and disciplines, joining with partners at the local, national and global levels towards a common vision and the realization of transformational change.

**Innovation:** Our staff and partners seek out the most effective solutions, piloting new approaches and adapting current practices to respond to the ever-evolving nature of our work and the communities we serve.

**Integrity:** We earn the trust of donors, partners, governments, and the people we serve by rigorously measuring performance, sharing our results, and holding ourselves accountable.

### PATHFINDER INTERNATIONAL

9 Galen Street #217  
Watertown, MA 02472, USA

Phone: +1-617-924-7200  
Fax: +1-617-924-3833

[tpetruney@pathfinder.org](mailto:tpetruney@pathfinder.org)

### PATHFINDER INTERNATIONAL & EVIDENCE TO ACTION PROJECT

1250 23rd Street NW, Suite 475  
Washington, DC 20037, USA

Phone: +1-202-775-1977  
Fax: +1-202-775-1998/1988



**Pathfinder**  
INTERNATIONAL

**PATHFINDER.ORG**